

Is NanoShuttle™ biocompatible?

YES!

We get asked this question all the time, and the answer is always yes. NanoShuttle™ is a nanoparticle assembly (~50 nm) consisting of gold, iron oxide, and poly-L-lysine (PLL)¹ that attaches to the plasma membrane electrostatically (50 pg/cell).

NanoShuttle™:

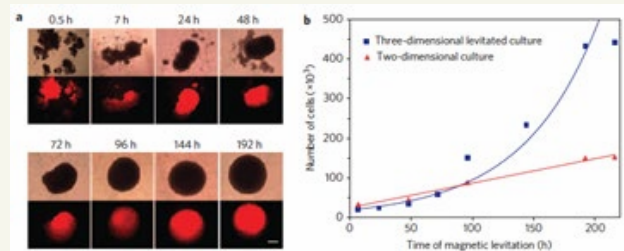
- Consists of biocompatible components: iron oxide and PLL are recognized as safe by the FDA^{2,3} and gold nanoparticles are in clinical trials for therapeutic use, with no indications for system toxicity⁴
- Does not bind any specific receptors, works with all cell types
- Will release off the cell over 7-8 days into the surrounding extracellular matrix, as shown by transmission electron microscopy (TEM)
- Requires magnetic forces (30 pN) only strong enough to aggregate but not harm cells
- Will not affect proliferation^{5,6}, viability⁶, metabolism^{5,7}, inflammatory⁵ or oxidative stress⁸, phenotype^{5,7,8}, and other macro cell functions
- does not cause any chromosomal abnormalities in cells, as shown by comparative genomic hybridization (CGH)

Overall, NanoShuttle™ is biocompatible and facilitates rapid 3D culture formation.

REFERENCES

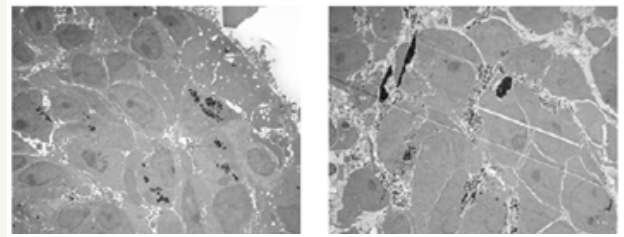
1. Souza et al. Nat. Nanotech. (2010)
2. GRN No. 135, FDA. (2004)
3. CFR, 21.I.A §73.200. (1994)
4. ClinicalTrials.gov #NCT00848042. (2014)
5. Tseng et al. Tissue Eng. C. (2013)
6. Daquinag et al. Tissue Eng. C. (2013)
7. Tseng et al. Acta Biomater. (2014)
8. Haisler et al. Nat. Protoc. (2013)

Spheroid Growth



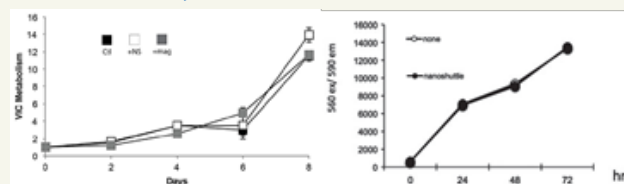
Over 8 d, mCherry-tagged glioblastoma grow faster in 3D vs. 2D¹

Transmission Electron Microscopy



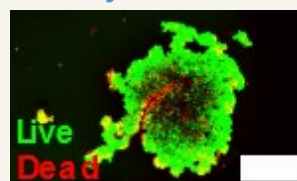
After 24 h (left), NanoShuttle™ is localized with the cells, but by 8 d (right) move out of the cell and into the extracellular space¹

Proliferation, Metabolism



Neither NanoShuttle™ nor magnetic forces have any effect on the proliferation of valvular interstitial cells (VIC, left)⁷ and 3T3 fibroblasts⁶ (right)

Viability



NanoShuttle™ has no effect on viability, as demonstrated by live/dead staining (live = green, red = dead) on magnetically 3D bioprinted spheroids of 10,000 HepG2 hepatocellular carcinoma cells in a 384-well plate. Scale bar = 500 μm