



Enhanced chemical and microbiological protection

KIMTECH PURE* A6 Breathable and Liquid Protection Coveralls



CE0120



ENISO15902-1:
2004



EN13054:
2005



EN14126:2003
Type 5-6 Type 6-5



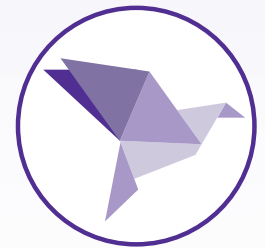
EN1149-5:
2008



EN1073-2:2002
(1)

Origami folded:

Innovative folding pattern to facilitate and reduce the gowning time. The coverall is presented unzipped with the inside of the garment first, reducing the risk of contaminating the outside of the garment.



Unique combination of two innovative fabric for protection and comfort:

- High performance laminated SMS fabric for the hood, front panel, arms and legs.
- Ultra lightweight breathable SMS for the back panel.



Applications

ISO 7/8 Grade C/D

Non sterile
Pharmaceutical
Manufacturing

Bio-Medical
Research

Pharmaceutical
Compounding

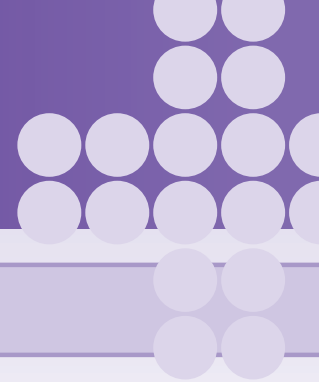
Biotechnology

Personal & Process protection

- Suitable for IOS 7 & 8 / Grade C & D cleanrooms
- Advanced film laminated fabric
- Low lint fabric, Helmke Drum Category II
- 94.6% bacterial filtration efficiency
- Certified PPE Cat III directive 89/686/EEC
- Type 6 limited chemical splash protection
- Type 5 particle protection
- EN 14126:2003 certified protection against infective agent penetration
- EN 1149-5:2008 Antistatic clothing

Design Features

- Hooded coverall available in size S to 4XL
- Presented unzipped with the inside of the garment first
- Arms telescope folded
- Legs telescope folded with built-in snaps
- Elastic cuffs and thumb loops
- No label on the outer surface
- Hood, front panel, arms and leg made of high performance laminated SMS fabric
- Back panel made of ultralight weight breathable SMS
- 1 large bag of 25 coveralls individually packed per case



Technical Data

Fabric Tests	Test Method	Result
Particle shedding test (Helmke Drum)	IEST-RP-CC003.3	Category II
Bacterial Filtration Efficiency (3.0 µm)	ASTM F2101	94.6%
Abrasion resistance	EN 530 Method 2	Class 3
Flex cracking resistance	ISO 7854 Method B	Class 2
Trapezoidal tear resistance	ISO 9073-4	Class 2
Puncture resistance	EN 863	Class 1
Tensile strength	EN ISO 13934-1	Class 1
Resistance to ignition	EN 13274-4 Method 3	Pass
Seam strength	EN ISO 13935-2	Class 2 ^(a)

^(a) Class 2 for the seam strength between film laminated fabric to SMS fabric. Class 4 for the seam strength between film laminated fabric to film laminated fabric

Testing Performed on the laminated SMS fabric applicable for the hood, front panel, arms and legs.

EN ISO 6350:2005 -Resistance of penetration by liquids/chemicals	CAS number	Penetration Class	Penetration %	Repellency Class	Repellency %
Sodium Hydroxide applicable 10%	1310-73-2	3	<1%	3	>95%
Sulphuric Acid 30%	7664-93-9	3	<1%	3	>95%
o-Xylene 100%	1330-20-7	3	<1%	2	>90%
1-Butanol 100%	71-36-3	3	<1%	2	>90%

Testing Performed on the breathable SMS fabric applicable for the back panel

EN ISO 6350:2005 -Resistance of penetration by liquids/chemicals	CAS number	Penetration Class	Penetration %	Repellency Class	Repellency %
Sodium Hydroxide 10%	1310-73-2	3	<1%	3	>95%
Sulphuric Acid 30%	7664-93-9	3	<1%	3	>95%
o-Xylene 100%	1330-20-7	0	–	0	–
1-Butanol 100%	71-36-3	0	–	0	–

KIMTECH PURE^{*} A6 Breathable and Liquid Protection Coveralls

Code	47681	47682	47683	47684	47685	47686	47687
Size	S	M	L	XL	2XL	3XL	4XL
Case Count	25	25	25	25	25	25	25