



**Motic®**

MORE THAN MICROSCOPY

**AE2000**

**Routine and Live Cell  
Microscope  
Solution**



# AE2000

## Routine and Live Cell Microscope Solution

**M**otic's new **AE2000 Inverted Microscope** is the ideal instrument for routine live cell inspection in both educational and high grade professional.

Designed for routine-lab or clinical work, as well as research requirements in Pharmaceutical Laboratories or Universities, the AE2000 is more than capable of fulfilling the expectations of its users. Superb optical quality can be expected from a brand new optical series of both bright field and phase contrast lenses, following Motic's proven successful CCIS® Infinity Optical System.





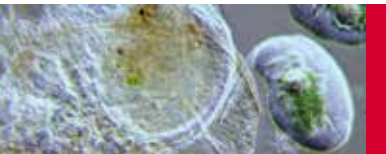
MoticamPro



ON OFF



**AE2000**

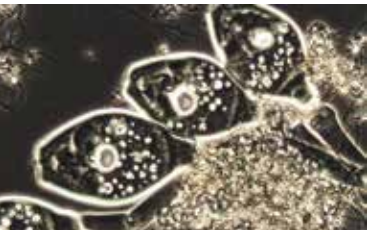


# AE2000

Routine & Live Cell  
Microscope  
Solution

## Microscope Stand

Designed as a basic instrument for any life-science laboratory, the AE2000 comes with a **Binocular** or **Trinocular** stand. With a surprisingly small footprint, Motic's AE2000 fits easily into every laboratory even when space is limited. A robust design and solid manufacturing ensure a long working life time even under rough usage conditions. Easy reach of both focusing and illumination controls guarantee comfortable operation for many hours.



AE2000 Trinocular

AE2000 Binocular

## Eyepiece tubes

Depending on the working environment and its demands, the AE2000 Series has a solution. Each eyepiece tube allows a **360° swiveling** movement as well as a flexible adjustment of the **interpupillary distance between 48 and 75mm**. The “**Butterfly mode**” increases the viewing height by 40mm.

Designed with a comfortable viewing angle of 45°, all AE2000 eyepiece tubes offer a **20mm Field of View (FOV 20)**.

## Eyepieces

In the AE2000, Motic's Infinity Corrected CCIS Optical system displays a field flatness of 20mm. The high eye point principle of the AE2000's eyepieces **ensure true colour and sharp images**, while **minimizing eye fatigue and strain**.



## Objectives

With the release of the new AE2000, Motic has achieved a **new standard in optical design** and development. The AE2000 offers a completely upgraded class of **Plan Achromatic lenses within the CCIS Infinity Optical concept**. This upgrade covers a complete range of the following magnifications for bright field and phase contrast: 4X, 10X, 20X and 40X. New in this level of microscopy is the special designed 4X Phase objective for fast overview and screening examinations.



## Stage

The convenient low positioned stage for optimized viewer posture and easy access has a new **hard-coated surface** for easy cleaning. All standard packages contain a **glass stage insert** as well as a **new metal insert**.

The optional mechanical stage can be supplied with inserts for the more common cell culture vessels, and standard glass slides.

## Condenser

The dovetail mounting of the condenser allows a **quick change between the two condensers**. Surprisingly Motic's concept has **one phase ring set**, covering both condensers and thus ensuring maximum flexibility. When the condenser is removed, **the maximum free working distance is 184mm**.



## Illumination

Motic's AE2000 has a **significantly brighter and more even illuminated image**. The light management of both **Halogen and LED versions** has been improved in terms of transmission rates and optimization of the light path. Standard packages come with a 6V/30W Halogen illumination.



The AE2000 also supports the most recent requirements for LED illumination by a **simple replacement of the Halogen bulb by a small LED module**. One of the main advantages of LED, the extreme reduction of heat development, can now be achieved for the essential study of living samples.

As a new safety precaution Motic has implemented a "sleep mode" on the AE2000, **based on an IR-sensor**. **This motion sensor detects a user** in front of the microscope and automatically turns off the microscope when it is left for **more than 15 minutes**.

GOINGgreen



# Documentation

Today, accurate documentation is becoming an increasingly important part in most natural science applications.

The combination of the AE2000 with a member of the **Moticam series** of digital cameras delivers **excellent live images, which can easily be stored for future usage**. All Motic cameras come equipped with software to transform the AE2000 into an analysis and documentation workstation.

Motic offer a complete range of digital cameras, starting with basic CMOS cameras from 1.3MP to 10MP up to the **research grade Moticam Pro Line** (CCD) with a maximum of 5MP, here including **Monochrome and Cooled versions**. These Moticam cameras deliver sharp live images with easy post-capture handling.



## General Specifications

- Binocular/Trinocular head, 360° Swiveling type, 45° inclined (light split in trinocular head 100:0/20:80)
- Interpupillary distance 48-75mm
- Widefield high eyepoint eyepieces, N-WF10X/20mm, with diopter adjustment on both eyepieces, with rubber eyecups
- Reversed quadruple revolving nosepiece, left side orientated
- CCIS® PL4X, PL PH10X, LWD PL PH20X and LWD PL40X
- Coaxial coarse and fine focusing system
- Hard coated stage 200X239mm
- ELWD N.A. 0.3, working distance 72mm
- 3- Position Phase slider, with Phase ring Ph1
- 6V/30W Quartz Halogen illumination with intensity control; Halogen bulb interchangeable with LED modules for 4500K and 6000K
- Universal power supply 100-240V
- Metal stage plate, Glass stage plate, blue filter, green filter, centering screws, power cord, Allen hexagonal key and vinyl dust cover are included

**Motic<sup>®</sup>**



Canada | China | Germany | Spain | USA

[www.motic.com](http://www.motic.com)